



# ANNANDALE HIGH SCHOOL ORCHESTRA

*"Music is a higher revelation than all wisdom and philosophy." - Beethoven*



4700 Medford Drive  
Annandale, Virginia 22003

703-642-4300  
adammerman@fcps.edu

Dear Annandale Orchestra Families,

9.16.2014

Welcome to the Annandale Orchestra Program! I am just thrilled to have you and your child in our Orchestra family this year. Here is an overview of the year. Please also find the school year calendar on the flip side of this letter.

**Supplies:** Violinists and violists should own or rent an instrument. Students will also need rosin, a few extra strings, and a shoulder rest (preferably a WOLFE FORTE or a KUHN rest- not a foam sponge). Cellos and basses will rent an instrument at school for rehearsals. Students are expected to also have an instrument for home practice. Cellos and basses will also need rosin and a rock stop.

### **Expectations and Guidelines:**

1. Committed attendance at all rehearsals and performances
2. Appropriate behavior towards self and others, including students, teachers, parents, and visitors, at all times.
3. Preparation and completion of music and all assignments.
4. Show respect for our equipment (instruments, stands, music and other furniture in the classroom.)
5. **Parent participation in at least one event per year.** (You may sign up here or through CHARMS).

**Orchestra Registration:** This year, we will continue to use the data program called CHARMS to maintain our student info and finance records. Each student has already received a "Charms Assignment" in which they should have updated information for us regarding parent e-mail, phone number, etc.. Information is password protected and this great program even has features to help us communicate volunteering needs and for you to sign up to volunteer easily! **Student numbers are made up of: 1<sup>st</sup> initial of first name, 1<sup>st</sup> initial of last name, last 4 digits of your FCPS student ID number.** School Code is: **AnnandaleHSOrch.** Charms now has an app for your cell phone! You can make trip payments, log practice, and e-mail me through this app!

**Private Lessons:** It is highly recommended that you take private lessons if possible. Having a private teacher enables students to receive one-on-one time with a specialist and focus specifically on their personal playing goals. Students who take private lessons typically advance more quickly than students who do not. A county-wide private teacher list is maintained by the county and will be available at any point throughout the school year.

### **Grading:**

Daily Rehearsal Technique	40%
Homework	10%
Concert Participation	30%
Assessments:	20%
Playing Tests	(15%)
Ticket Out the Door	(5%)

**Spring Trip:** We will take a Spring Trip to Boston, MA this year! All students are strongly encouraged to attend the trip. We will have fundraisers throughout the school year to raise money so the trip is as affordable as possible. This trip will include a clinic with either the Boston Symphony Orchestra or the New England Conservatory of Music, attendance at a symphony concert, college visits, shopping, and tons of food☺

Musically Yours,

Mrs. Ammerman

*"My imagination can picture no fairer happiness than to continue living for art." – Clara Schumann*



## ANNANDALE HIGH SCHOOL ORCHESTRA

*"Music is a higher revelation than all wisdom and philosophy." - Beethoven*



4700 Medford Drive  
Annandale, Virginia 22003

703-642-4300  
adammerman@fcps.edu

*"My imagination can picture no fairer happiness than to continue living for art." – Clara Schumann*

# *Annandale Orchestras*

Annandale High School

2014 - 2015

Room 320



Orchestra Director:

Mrs. Angela Ammerman, MME

703.642.4300

[adammerman@fcps.edu](mailto:adammerman@fcps.edu)

Annandale High School  
4700 Medford Dr.  
Annandale, Virginia 22003

# Course Descriptions:



## Concert Orchestra

R1

923815

Previous participation in orchestra for a minimum of one year and/or an audition for Mrs. Ammerman is required for this course. Student must own or rent an instrument. Literature and method books will be provided by Annandale High School. Students will work on refining skills such as tone production, music reading, and accuracy of pitch, bow usage, and rhythm. Students will study a variety of musical periods through musical performance. Rehearsals and performance outside of normal school hours are required as part of this course.

### Learning Objectives:

1. The student will reinforce and improve working knowledge of the proper posture and technique
2. Students will develop the ability to perform music at a given level as described by the Virginia Band and Orchestra Directors' Association (VBODA).
3. Students will develop and demonstrate the ability to sightread music at a challenging level as described by VBODA
4. Students will demonstrate a practical understanding of expressive musical concepts
5. Students will develop stylistic qualities consistent with historical context
6. Students will develop listening skills in order to determine essential musical elements of given pieces of music



## Sinfonia Orchestra

R3

923915

Previous participation in orchestra for a minimum of two years and/or an audition for Mrs. Ammerman is required for this course. Student must own or rent an instrument. Literature and method books will be provided by Annandale High School. Students will work on the development of vibrato, shifting, and advanced bow techniques. Students will also work on perfecting skills such as tone production, expression, and accuracy of pitch, bow usage, and rhythm. Students will study a variety of musical periods through musical performance. Rehearsals and performance outside of normal school hours are required as part of this course.

### Learning Objectives:

1. The student will improve working knowledge of the proper posture and technique
2. Students will develop the ability to perform music at a given level as described by the Virginia Band and Orchestra Directors' Association (VBODA).
3. Students will develop and demonstrate the ability to sightread music at a challenging level as described by VBODA
4. Students will demonstrate the ability to self-assess musical performances
5. Students will develop stylistic qualities consistent with historical context
6. Students will develop listening skills in order to determine essential musical elements of given pieces of music
7. The student will demonstrate the ability to dictate a 16 measure melody





## Artiste Orchestra

W8

923916

Previous participation in orchestra for a minimum of two years **and** an audition for Mrs. Ammerman is required for this course. Student must own or rent an instrument. Literature and method books will be provided by Annandale High School. Artiste Orchestra offers instruction to the advancing musician. Students will work on the perfection of vibrato, shifting, and advanced bow techniques. Students will also continue fine tuning skills such as tone production, expression, and accuracy of pitch, bow usage, and rhythm. Students will study a variety of musical periods through musical performance. Rehearsals and performance outside of normal school hours are required as part of this course. Students are strongly encouraged to take private lessons.

### Learning Objectives:

1. The student will improve working knowledge of the proper posture and technique
2. Students will develop the ability to perform music at a given level as described by the Virginia Band and Orchestra Directors' Association (VBODA).
3. Students will develop and demonstrate the ability to sightread music at a challenging level as described by VBODA
4. Students will demonstrate the ability to lead and assess rehearsals
5. Students will refine stylistic qualities consistent with historical context
6. Students will refine listening skills in order to determine essential musical elements of given pieces of music
7. The student will demonstrate the ability to dictate a 16 measure piece of music



## Philharmonic Strings

W6

925016

Previous participation in orchestra for a minimum of two years **and** an audition for Mrs. Ammerman is required for this course. Student must own or rent an instrument. Literature and method books will be provided by Annandale High School. Chamber Orchestra offers instruction to the advanced and serious musician. Students will continue to work on the perfection of vibrato, shifting, and advanced bow techniques. Students will also continue fine tuning skills such as tone production, expression, and accuracy of pitch, bow usage, and rhythm. Students will study a variety of musical periods through musical performance. Rehearsals and performance outside of normal school hours are required as part of this course. Students are strongly encouraged to take private lessons and are **required to audition for District Honors Orchestra.**

### Philharmonic Orchestra – Full Orchestra

Students enrolled in Philharmonic Strings will be expected to participate in the Annandale Philharmonic Orchestra. This ensemble will rehearse on **Monday evenings from 7 – 9 pm** in room 320 beginning January 5<sup>th</sup>, 2015. If Philharmonic musicians cannot participate in this ensemble, they will be required to find a sub from the Artiste Sub List. This list will be given to Philharmonic musicians at the first rehearsal. Students will also be expected to perform the Philharmonic Orchestra repertoire at one band concert on May 28<sup>th</sup>, 2015.

### Learning Objectives:

1. The student will improve working knowledge of the proper posture and technique
2. Students will develop the ability to perform music at a given level as described by the Virginia Band and Orchestra Directors' Association (VBODA).
3. Students will develop and demonstrate the ability to sightread music at a challenging level as described by VBODA
4. Students will demonstrate the ability to lead and assess rehearsals
5. Students will refine stylistic qualities consistent within historical context
6. Students will refine listening skills in order to determine essential musical elements of given pieces of music
7. The student will demonstrate the ability to dictate a 32 measure piece of music
8. Students will develop the ability to compose soli and duets

# *Orchestra Guidelines:*



## **1. Always Come Prepared:**

❖ bring all materials to class:

- Instrument
- Music
- Pencil

## **2. Be Timely:**

❖ within 3 minutes of the period students should be in assigned seats with instrument in hand

## **3. Respect Classmates, Teachers as well as instruments and equipment:**

- ❖ a musical environment is a team activity and requires appreciation as well as respect for all players
- ❖ instruments and musical equipment must be handled with respect and care

## **4. Demonstrate a Sense of Maturity:**

- ❖ students shall keep hands, feet, and instruments to yourself at all times
- ❖ students shall NOT talk when another classmate or teacher is speaking
- ❖ avoid class disruptions
- ❖ do not blame others for your actions

## **5. Keep Food, Drinks, and Gum Out of the Classroom**

### **\*Violation of Orchestra Guidelines will result with the following consequences:**

1<sup>st</sup> violation – verbal warning

2<sup>nd</sup> violation – phone call to parents

3<sup>rd</sup> violation – after-school detention with letter of apology to class

4<sup>th</sup> violation – parent/teacher conference WITH student AND elimination from Spring Trip

5<sup>th</sup> violation – Office Referral

## *Classroom Seating:*

Students will be seated during Orchestra Rehearsals at Mrs. Ammerman's prerogative. Students will not be arranged in order of "best player" to "least player." There will not be auditions for class seating.

Students may audition for the **CONCERT ONLY** position of first chair for first violins, second violins, viola, cello and bass if they wish. Seating may change between performances in order to give students leadership opportunities. Please understand that Mrs. Ammerman places students in concert seating based on many different qualities. Any further questions may be addressed by contacting Mrs. Ammerman.

## *Personal Electronic Device Policy*

There will be days when students will be asked to bring personal electronic devices (PEDs) for curricular activities. Mrs. Ammerman will inform students in advance of these days. PEDs will be confiscated and turned into the main office if students are using PEDs without permission.

# *Fingernails*

## 1. Why?

Fingernails past a certain length can be extremely detrimental to the development of your child’s instrumental technique. Because of this, “long” fingernails will not be allowed in class.

## 2. Violins and Violas:

- ❖ fingernails for violinists and violists must be slightly shorter than the end of the finger

## 3. Cello and Bass:

- ❖ cellists and bass players must have nails that do not pass the fingertip

## 4. Acrylic Nails:

- ❖ acrylic nails will not be accepted in Orchestra period.
- ❖ students who refuse to dispose of acrylic nails will not be allowed to utilize school instruments

# *Annandale Orchestra Grading:*

<u>Daily Grade:</u>	<u>Assessments:</u>	<u>Concert Attendance:</u>
<ul style="list-style-type: none"> <li>- Participation</li> <li>- Materials (pencil, sheet music, instrument)</li> <li>- Tuning</li> </ul>	<ul style="list-style-type: none"> <li>- Journal Entries</li> <li>- Listening Quizzes</li> <li>- Ticket Out the Door</li> <li>- Playing Tests/Practice</li> </ul>	<ul style="list-style-type: none"> <li>- Check In with Chaperone</li> <li>- Balcony Seating</li> <li>- Appropriate Attire</li> </ul>

## Orchestra Grade:

Daily Rehearsal Technique	40%
Homework	10%
Concert Participation	30%
Assessments:	20%
Playing Tests	(15%)
Ticket Out the Door	(5%)

\*\*\*Extra Credit will become available throughout the year. Please do not hesitate to ask for opportunities to improve your grade.

# *Awards:*

**Heart of the Orchestra Award (1)** – this award is presented to a Senior in orchestra. The recipient of this award is the most supportive, encouraging, and musically active student in the program.

**Director’s Award (1)** – this student must audition for Senior Regional Orchestra, District Orchestra and must be section leader for at least one performance. This student also must maintain a minimum of a 95% in Orchestra with at least **200 hours of practice** per semester. This award is given only to a Senior.

**National School Orchestra Award (1)** – this student must audition for Senior Regional Orchestra, District Orchestra, and must be a section leader for at least one performance. This student also must maintain a minimum of a 95% in Orchestra with a minimum of **180 practice hours** per semester. This award is reserved for an upperclassman.

**110% Award (2-5)** – the recipient of this award must audition for District Orchestra OR Senior Regional, must constantly put forth extra effort. This student must maintain a minimum of a 90% in Orchestra with at least **100 hours of practice** per semester.

**Leadership (2-5)** – This award is given to a student who has consistently displayed leadership as a musician, peer and student. This student must have participated in Solo/Ensemble Festival, District Orchestra Auditions OR Senior Regional auditions. This student must maintain a minimum of 90% with at least **100 hours of practice** per semester.



# *Varsity Letter Application:*

**Student Name:** \_\_\_\_\_ **Ensemble:** \_\_\_\_\_ **School Year: 2014 – 2015**

Students seeking a Varsity Letter in Orchestra must keep a log of all orchestra-related events throughout the year. Mrs. Ammerman WILL NOT keep this log for orchestra members but will sign off. Students seeking a Varsity Letter in Orchestra must have been in the Annandale Orchestra program for 2 or more years and demonstrate their willingness and ability to go above and beyond the minimum requirements of membership by fulfilling the following within one year:

- ❖ Regular daily class attendance
- ❖ Attendance at ALL scheduled rehearsals, concerts, performances, and festivals
- ❖ **Participation in fundraising activities and events**
- ❖ The student must also earn a minimum of 100 points through participation in a variety of the following activities:

<b>Dates</b>	<b>Mrs. A Initial</b>	<b>Requirement</b>	<b>Points</b>
		Student takes private lessons on orchestra instrument (3 consecutive month minimum)	40
		Student takes private lessons on non-orchestra instrument (3 consecutive month minimum)	20
		Student has prepared and performed at Solo & Ensemble Festival receiving an Excellent or Superior Score	30
		Student has auditioned for Jr. or Sr. District Orchestra	20
		Student has successfully made it into Jr. or Sr. District Orchestra	20
		Student has auditioned for Senior Regional Orchestra	30
		Student has successfully made it into Senior Regional Orchestra	30
		Student attends an outside of school concert or musical (max of 20 points total)	5 each
		Student performs outside of school with an ensemble (ongoing ensemble)	30
		Student participates in recruiting or performing events for the Annandale Orchestras	10 each
		Student tutors at an elementary or middle school orchestra program (6 consecutive months)	40
		Student attends concert for Annandale Pyramid Schools, assists with tuning, and any other help needed	5 each
		Student teaches private lessons	20
		Student volunteers with the District X Middle School Orchestra Assessment	1/hour

Other activities for the general improvement of the student, the Annandale Orchestras, and the Annandale Pyramid Orchestras may count toward point bank. Points will be awarded at the Director’s discretion:

<b>Date(s)</b>	<b>Mrs. A Initial</b>	<b>Activity:</b>	<b>Points</b>

**TOTAL POINTS:** \_\_\_\_\_

Points must be submitted to Mrs. Ammerman no later than **Friday, March 27<sup>th</sup>** in order to receive letter awards at the Red Carpet Academy Orchestral Awards.

\_\_\_\_\_  
Student Signature

\_\_\_\_\_  
Parent Signature



# *Attendance/Concert Procedures:*

## **Attendance to ALL Orchestra Concerts and rehearsals are mandatory.**

- ❖ in case of emergency, parent, student and/or guardian MUST contact the teacher
- ❖ special situations may be discussed between students, guardians, and director
- ❖ an appropriate assignment may be assigned if a student misses due to emergency situations

Excused Absences – Students who are excused from a concert for a family emergency must make up the concert. These students will have the opportunity to earn full points from the concert by performing his or her part for Mrs. Ammerman via audio recording. Students will be graded based upon a performance rubric.

Unexcused Absences – Students who neglect to attend a concert without any prior approval may have the opportunity to make up a maximum of 80% of the concert participation grade. Each student in an ensemble plays a vital role in the success of our concert. Students who miss the concert greatly affect the entire ensemble and the ability to succeed in a performance. Students will be required to perform his or her part for Mrs. Ammerman via audio recording. Students will be graded based upon a performance rubric.

## **Concert Attire:**

Each AHS Orchestra Member is provided with concert attire for use during concerts. The concert uniform is purchased by the AHS Orchestra Boosters and is rented to the members of the orchestra for one school year for the charge of \$50 (checks made payable to Annandale High School). Please find attached a contract for this uniform. **The Masquerade concert is the only exception, however, students must follow school dress code guidelines for that concert.**

\*Students dressed inappropriately for concerts will **not be allowed on stage** and will receive a 50% for their Concert Grade. In this case, the student must still stay until the end of the concert.

## **Concert Dates:**

<b>Masquerade Concert:</b>	October 23 <sup>rd</sup> , 2014	7 pm
<b>Winter Concert:</b>	December 18, 2014	7 pm
<b>Pyramid Concert:</b>	February 19, 2015	6:30 pm
<b>District X HS Orchestra Assessment:</b>	March 6 – 7, 2014	TBD

@ West Potomac HS

- DO NOT SIGN UP FOR SAT's THIS WEEKEND!

<b>Almost Summer Concert:</b>	May 21, 2015	7 pm
Spring Band Concert**	May 28 <sup>th</sup> , 2015	7 pm

\*\*All Philharmonic students must perform in the concert as the Annandale Philharmonic Orchestra

\*\*\*All performances are subject to change. Your child will notify you of any changes to this schedule.

# *Orchestra Leadership:*

## **President**

- ❖ lead class if Mrs. Ammerman is absent or running late
- ❖ keep class morale at a high point
- ❖ take daily attendance

## **Vice President**

- ❖ assume Presidential duties in case of absence
- ❖ ensure cleanliness of room after class (books, rosin, & chairs)

## **Librarian**

- ❖ file any music in the “to be filed box” as soon as there is music in it

### Secretary

- ❖ update Mrs. Ammerman's calendar
- ❖ maintain practice chart

### Photographer

- ❖ take pictures of Orchestra members at music events and during "special moments"
- ❖ record other ensembles with camcorder

\*Mrs. Ammerman retains veto power, final approval, and may "impeach" officers.

## *Instruments:*

### Instruments and Strings:

- ❖ All students are required to own/rent their own instruments. Cellists and Bass players may rent a school instrument for the school year in order to eliminate the hassle of transporting the instruments.. Instruments must be appropriate in size and quality. They must be stored in a cool place and in the case if not in use when not at school.
- ❖ Students are encouraged to purchase an extra set of strings fitted to their instrument and size in case a string breaks. If a string breaks at school, I will replace the string with a school string, however, **students must return within a week with a replacement string to repay the school.**

### Instrument Storage:

- ❖ On days when students have Orchestra, all students are required to bring their instrument in the morning and drop it off in the designated locker.
- ❖ violinists and viola players are strongly encouraged to take instruments home every day

### Accessories:

- ❖ shoulder rests are going to be required for violins and violas. Students must have a shoulder rest no later than **October 17<sup>th</sup>, 2014** . The best shoulder rest to purchase is the "wolfe forte secundo" or the "kun." Make sure that the shoulder rest fits the instrument. Shoulder rests can be purchased at most music stores, on e-bay or amazon.com for \$20 to \$40.
- ❖ ALL STUDENTS must have the following:
  - Soft cleaning cloth (handkerchief or non-terry dishtowel)
  - Mute
  - Rosin
  - Folding music stand (for in home practices)
  - cello and bass players must have an endpin holder (rock stop)

## *Activities and Expectations:*

1. Annandale Orchestras will present five concerts annually (see attached schedule.) All orchestras will participate in the District X Orchestra Festival in March. **Additional performances may be required of Philharmonic String members.**
2. All students are strongly encouraged to pursue private instruction on their instrument.
3. All students are encouraged to audition for Junior District Orchestra (in November) or Senior District Orchestra and of course attend the corresponding event should you be accepted, and/or perform at Solo and Ensemble Festival (in April.) Philharmonic String members are **REQUIRED** to participate in at least one of these events.
4. Orchestras with adequate instrumentation will have the opportunity to participate in Spring travel and/or competitive events.

<b>Senior Regional Orchestra Auditions</b>	<b>September 29</b>	<b>McLean HS</b>
<b>Senior Regional Orchestra Events</b>	<b>November 6 - 8</b>	<b>Herndon HS</b>
<b>District Orchestra Auditions</b>	<b>November 18</b>	<b>Lee HS</b>
<b>District Orchestra Event</b>	<b>January 8 – 10</b>	<b>Falls Church HS</b>
<b>All Virginia Auditions</b>	<b>February 28</b>	<b>James Madison Univ.</b>
<b>HS Orchestra Assessment</b>	<b>March 6 – 7</b>	<b>West Potomac HS</b>
<b>All Virginia Event</b>	<b>April 9 - 11</b>	<b>Virginia Tech</b>
<b>Solo/Ensemble Festival</b>	<b>April 4 – 5</b>	<b>Jackson MS</b>

## *Monies:*

Title:	Purpose:	Amount Due:	Payable To:	Options:	Deadlines:
Cello/Bass Rentals	To avoid transportation issues if necessary	\$46/year	Annandale High School	Cash/Check	October 3, 2014
Free/Reduced Lunch Instrument Rental	Providing instruments for students in need if necessary	\$20/Year (as long as you have agreed to share your free/reduced status with Orchestra)	Annandale High School	Cash/Check	October 3, 2014
<b>Uniforms</b>	<b>Uniform adjustments (hemming, dry cleaning, replacements)</b>	<b>\$50/Year</b>	<b>Annandale High School</b>	<b>Cash/Check</b>	<b>October 3, 2014</b>
<b>Solo/Ensemble</b>	<b>Optional participation fee based upon ensemble size.</b>	<b>No more than \$11/Student</b>	<b>Annandale Orchestra Boosters</b>	<b>CHARMS – Credit Card, Cash, Check</b>	<b>Late March (TBD)</b>
<b>Spring Trip, 2015</b>	<b>Pay for hotel, transportation, participation, events, food, etc.</b>	<b>Approximately \$580 (cost will become clearer as we get closer to the date)</b>	<b>Annandale Orchestra Boosters</b>	<b>CHARMS – Credit Card, Cash, Check, Fundraising profits</b>	<b>Broken Payments: Nov. 1, January 6, March 4</b>
<b>Special Events</b>	<b>Participation Fees</b>	<b>TBD if student qualifies for event.</b>	<b>Annandale Orchestra Boosters</b>	<b>CHARMS – Credit Card, Cash, Check</b>	<b>TBD</b>

# DELINEATED GRADING SCALE

---

**A**

- Demonstrates superior work in daily rehearsals
  - Shows evidence in class of regular, thorough home practice
  - Works always to the best ability in daily rehearsals
  - Is able to work effectively with teacher and classmates – can function as a leader if needed
  - Has correct music, equipment at all times – is always on time and attentive
- 

**B**

- Demonstrates above average work in daily rehearsals
  - Shows evidence in class of regular home practice
  - Works to the best of ability in most daily rehearsals
  - Is able to work effectively with teacher and classmates – can work independently
  - Has correct music, equipment regularly – is on time and attentive
- 

**C**

- Demonstrates average work in daily rehearsals
  - Shows evidence in class of adequate, but irregular home practice
  - Works below ability during many daily rehearsals
  - Experiences a little difficulty working with teacher or classmates
  - Is without proper equipment or music at times – is occasionally late or inattentive
- 

**D**

- Demonstrates below average work in daily rehearsals
  - Shows little evidence in class of home practice
  - Works below ability in most daily rehearsals
  - Experiences much difficulty working with teacher or classmates – needs supervision often
  - Is frequently without proper equipment or music – is frequently late or inattentive
- 

**F**

- Demonstrates poor work in daily rehearsals
  - Shows no evidence in class of home practice
  - Works below ability – shows no effort
  - Is regularly without proper equipment or music – is regularly late, inattentive or disruptive
  - Unable to complete independent work
- 

Averaging for weekly, nine-week, semester, or final grades will follow the guidelines below:

<b>A</b>	<b>3.8-4.0</b>	<b>93-100</b>
<b>A-</b>	<b>3.4-3.7</b>	<b>90-92</b>
<b>B+</b>	<b>3.1-3.3</b>	<b>87-89</b>
<b>B</b>	<b>2.8-3.0</b>	<b>83-86</b>
<b>B-</b>	<b>2.4-2.7</b>	<b>80-82</b>
<b>C+</b>	<b>2.1-2.3</b>	<b>77-79</b>
<b>C</b>	<b>1.8-2.0</b>	<b>73-76</b>
<b>C-</b>	<b>1.4-1.7</b>	<b>70-72</b>
<b>D+</b>	<b>1.1-1.3</b>	<b>67-69</b>
<b>D</b>	<b>0.8-1.0</b>	<b>64-66</b>
<b>F</b>	<b>0.0-0.7</b>	<b>Below 64</b>

## Permission to Use the Music Room

My Child \_\_\_\_\_ (circle one) does/does not have my permission to use the Orchestra Room and other approved locations in Annandale High School before and/or after school to practice, rehearse with friends, get help from Mrs. Ammerman or study. I understand that Mrs. Ammerman is unable to provide constant supervision before and after school. I have instilled in my child the best behavior and communication of his/her whereabouts fully to Mrs. Ammerman when using the Music Room before and/or after school. I will pick up my child on time.

\_\_\_\_\_  
Parent Signature

\_\_\_\_\_  
Date

\_\_\_\_\_  
Student Signature

\_\_\_\_\_  
Date

**DUE**  
**September 12<sup>th</sup>,**  
**2014**

## Permission to Use Students' picture, video, work on the school website/local newspapers/local media sources

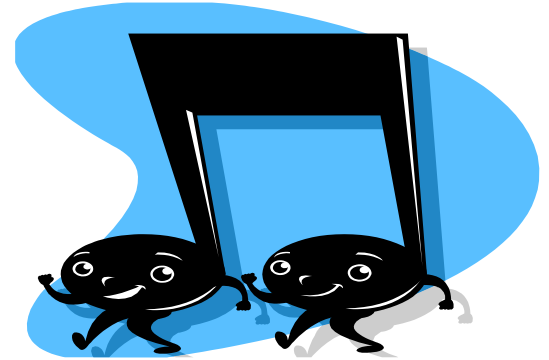
Annandale Orchestra **DOES/DOES NOT** (circle one) have my permission to use my child \_\_\_\_\_'s picture, video or work on the internet, newspaper or bulletin board. Students and parents will always be notified before posting given media.

\_\_\_\_\_  
Parent Signature

\_\_\_\_\_  
Date

\_\_\_\_\_  
Student Signature

\_\_\_\_\_  
Date



## Annandale High School Orchestra Handbook Receipt

My child and I have viewed the Annandale Orchestra Handbook (either online or in hardcopy). We have reviewed the information and will abide by the guidelines set in this document.

\_\_\_\_\_  
Student Name

\_\_\_\_\_  
Student Signature

\_\_\_\_\_  
Date

\_\_\_\_\_  
Parent Name

\_\_\_\_\_  
Parent Signature

\_\_\_\_\_  
Date



\_\_\_\_\_  
Parent e-mail

\_\_\_\_\_  
Parent Phone number

\*\*\*Please tear this sheet off and turn in no later than **September 12<sup>th</sup>, 2014** \*\*\*\*



